

KIDS & FUTURE FOUNDATION

2020 Annual Report



Kids and Future Foundation pursues a society where all children and youth can dream and achieve a bright and healthy future.



Gather your attention and love to change the world and create a happier future for the children.

The year 2020 was a year of hardships for our foundation just as it was rigorous for all social classes. In particular, from the perspective of our foundation, which mainly carries out corporate social contribution projects (CSR), It was a year of many concerns about how to conduct CSR activities in line with the post-COVID era.

The foundation responded closely to the situation caused by COVID-19 last year and generated the best countermeasures to support the children. By researching and implementing the most efficient and professional projects, we strived to preserve the noble social contribution business purpose of our partner companies. I would like to express my sincere gratitude and respect to the corporate partners and supporters who have trusted our foundation despite the time of difficulty. The 2020 Annual Report records the activities of the past year that have been achieved, thanks to your trust and strong support for our foundation. We wish to disclose in detail about how our funds have been managed for these children throughout the year.

In particular, by attaching all group/individual support statements for public interest projects, we wanted to make it clearer how the precious funds were used.

Along with our partner companies and supporters, our foundation is walking the path of the COVID era that has never been taken before. If you accompany us along the way, the Children and Future Foundation will continue to endeavor to overcome the adversity of COVID and carry out the noble will of our donors. Thank you.

A. K. Lee

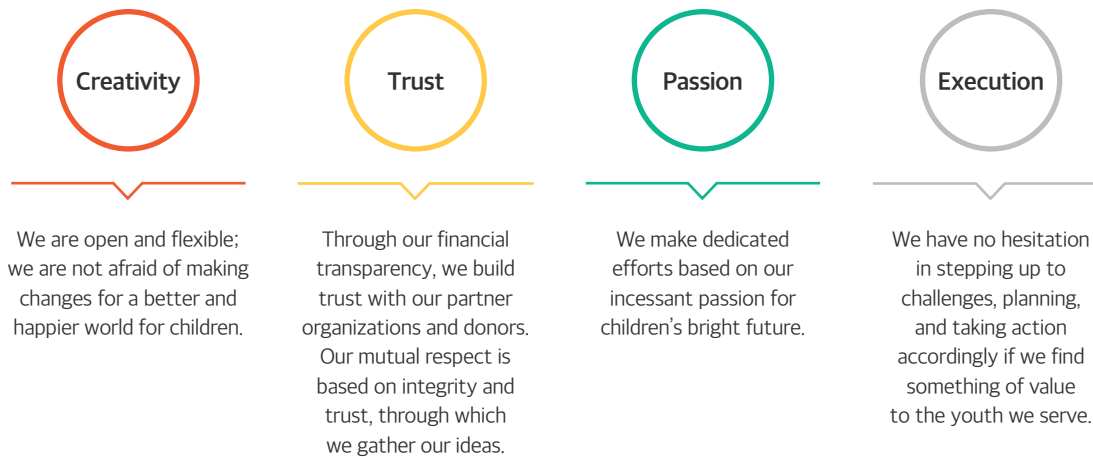
LEE Hoon-kyu
Chairman
Kids & Future Foundation

About the Foundation

VISION·MISSION



Core Values

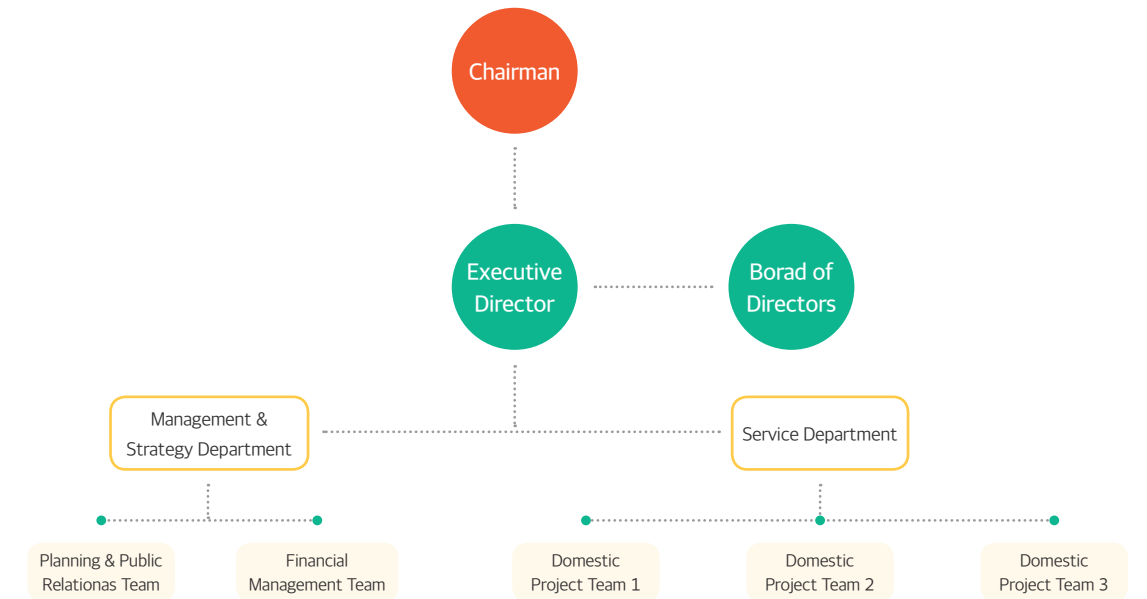


Role of the Foundation



Organization Chart

Organizational Chart



Board of Directors

Position	Name	Previous & Current Affiliations	Term
Chairperson	Hun-kyu, LE	Present: Chairman, K&F Previous: President, CHA University Previous: Director, Incheon District Prosecutors' Office	2019.03.17~2022.03.16
Director	Tae-shin, JANG	Previous: Ambassador to Greece	2019.06.28~2022.06.27
Director	Chi-jung, KIM	Present: Representative, Oracle Law Firm Previous: Chief Prosecuting Attorney, Seoul High Court	2020.01.20~2023.01.19
Director	Eun-kyung, SHIN	Present: Professor, CHA University Previous: Korea Youth Work Agency, Chairperson	2021.04.26~2024.04.25
Director	Hyung-hye, JIN	Present: Lawyer, GL Law Firm	2019.07.16~2022.07.15
Director	Jung-seon, SEOL	Present: Lawyer, Lee & Ko Previous: Director of Information and Communication Cooperation Policy Division, Ministry of Information and Communication	2019.08.01~2022.07.31
Director	Eun-sook, CHO	Present: Director of Dongjak Completion Social Welfare Center Previous: Director, Welfare Planning Division, Dongjak-gu Community Security Council	2020.11.12~2023.11.11
Executive Director	Du-jun, PARK	Present: Executive Director, K&F Present: Research Committee Member, GuideStar Korea	2021.05.22~2024.05.21
Auditor	Joo-woong, LEE	Present: Attorney at Law Firm (Yu) Won Previous: Seoul Eastern District Prosecutor's Office, Criminal Division 2	2020.12.16~2022.12.15
Auditor	Joo-hye, LEE	Present: auditor, Shin Bo Previous: auditor, Sham Jung	2019.12.03~2021.12.02

(As of Mar. 10, 2021)

Board Activities

Category	2017	2018	2019	2020
Board of Directors No. of Meetings	2	3	3	3
Average Meeting Participation Rate	70	69	83	69
No. of Items for Review	4	10	15	6

Certifications & Awards Received

K&F

Program Awards Received

Korea Economic Education Awards 2020	Schools, teachers, and employees of economic education institutions and economic education institutions who have contributed to the revitalization of economic education and the spread of economic education among institutions and individuals who have conducted economic education for more than two years are selected.	Award Received Date of Award Organizer	Korea International Trade Association President's Award (Youth Economy Class) Dec. 15, 2020 Ministry of Strategy and Finance, Council of Economic Education Organizations
Korea Social Contribution Grand Prize 2020	Awarded to individuals, groups, companies and institutions that have contributed to national development through social contribution activities in five areas: job creation, social service, regional development, industrial development, and overseas volunteering.	Award Received Date of Award Organizer Host	Commendation from the Minister of Health and Welfare (AstraZeneca Korea) Dec. 11, 2020 Korea Social Contribution Foundation Korea Social Contribution Awards Organizing Committee
CSR in the Community 2020	As a system which started in 2019, continuous social contribution will be made with partnerships with non-profit organizations in the local community. Proceeded to recognize and encourage the hard work of companies and public institutions which took part. Selected at the event "The Day of Recognition of Community Social Contribution." Selected for 2 consecutive years.	Award Received Date of Award Host	CSR in the Community (Shinhan Card, AstraZeneca Korea) Dec. 03, 2019, Nov. 11, 2020 Ministry of Health and Welfare, Korea National Council on Social Welfare
2019 Seoul Social Contribution Award	Held since 2017 by the Seoul Metropolitan Government and Seoul Welfare Foundation to support social contribution partnerships of partner organizations such as companies and welfare facilities.	Award Received Date of Award Host	Excellent Program Nov. 15, 2019 Seoul Welfare Foundation
Received Presidential Citation for Shinhan Card Arumin Library at the "2019 25th Reading Culture Award"	Held to find and award individuals and organizations that have contributed to promoting the reading culture. K&F was awarded the Presidential Citation in recognition of the Foundation's promotion of the reading culture by operating the Shinhan Card Arumin Library for the past 10 years.	Award Received Date of Award Organizer Host	Presidential Citation Aug. 31, 2019 Ministry of Culture, Sports and Tourism Publication Industry Promotion Agency Of Korea
2014 Samsung Social Contribution Award	Aims to award organizations and individuals that have contributed to local community development and a warmhearted corporate culture.	Award Received Date of Award Host	Social Contribution Partner Award Nov. 20, 2014 Samsung Social Volunteer Group
2010 Economic Education Grand Award	Held to commend organizations and individuals devoted to economic education area and to vitalize economic education.	Award Received Date of Award Host	Best Practices of Economic Education (4th place in 'General Area') Jan. 21, 2011 Korea Association of Economic Education

K&F

Certifications & Awards Received

Certified by GuideStar Korea for highest transparency for "four consecutive years"	Korea Guide Star, a donor organization evaluation agency, evaluates public interest corporations based on transparency, accountability, financial stability, and efficiency. Awarded the highest transparency certification and crown certification for 5 consecutive years from 2016 to 2020.	Award Received Certified Year Host	Perfect scores for Financial Stability / Efficiency / Accountability / Transparency 2016~2020 GuideStar
Grand Awards for Excellence in Sustainability Management	According to Article 19, Section 3 of the Industrial Development Act, the award is given to facilitate companies' autonomous sustainable management. It aims to enhance domestic awareness of sustainable management by discovering and awarding best practices, thereby motivating companies to actively carry out sustainable management activities.	Award Received Date of Award Host	Social Responsibility Management Award (first NPO to be awarded) Nov. 4, 2009 Ministry of Knowledge Economy
Sustainability Report Award Received	As an award given by the Korean Standards Association with the cooperation of the GRI, which sets the guideline for a global 'Sustainability Report' of corporations, various stakeholders assess the report through online participation. The award aims to offer feedback for improvement for domestic reports and to contribute to their distribution and proliferation. Award Received: Stakeholder Area (first NPO to be awarded)	Award Received Date of Award Host	Stakeholder Area (first NPO to be awarded) Oct. 14, 2009 Korean Standards Association
Recipient of the Best Prize for the Samil Transparency Award	An award for NPOs given by Samil Accounting Firm and Samil Future Foundation through an objective evaluation of the organization's transparency in accountability and outcomes, with an aim to spread a donation culture based on trust.	Award Received Date of Award Host	Best Prize January 2009 Samil Future Foundation
Grand Award for Sharing Received	An award given to individuals who have carried out sharing and volunteer activities while earnestly assuming their respective social duties for the nation and the local community. To find such awardees, the National Assembly, political parties, media, and civic groups come together and they altogether try to spread the culture of sharing through the media.	Award Received Date of Award Host	The Presidential Award for Education, Science & Technology May 7, 2010 Nanum News
International Youth Foundation (IYF) Certification for Global Partner	K&F received a Certification of Excellence from the IYF and is the IYF's only global partner in Korea. This certification was based on 13 indices designated by the IYF used to evaluate each organization's management methods and effectiveness of strategies; indices evaluated for influence on youth were independence, objectivity, transparency, effectiveness, and continuity.	Award Received Date of Award Host	Excellence 2004 International Youth Foundation

Donation Status HISTORY



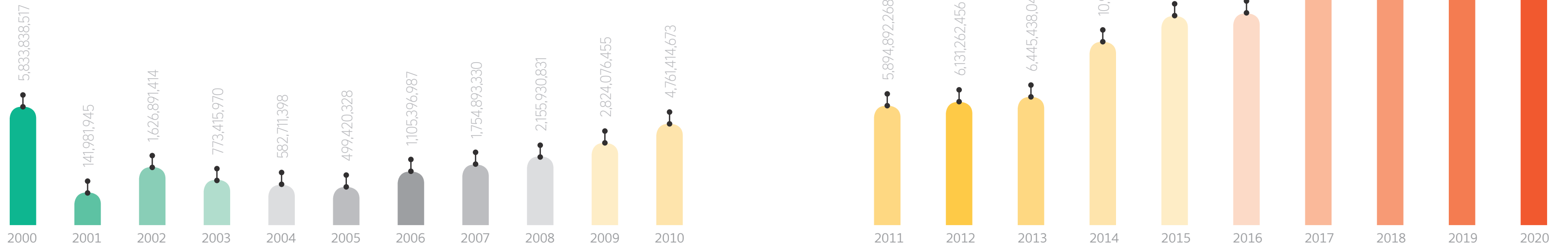
Donations in 2020 (excluding other revenue)

23,363,172,055



Cumulative donation in 2000-2020

Achieved **160 billion** won



(Unit : KRW)

2000 · Establishment: Foundation Ceremony
· First project: 2000 Sharing & Support Project

2002 · Became the Korean partner of IYF (International Youth Foundation)
· IYF Youth Informatization Support Project

2003 · Make a Connection Workshop (NOKIA)

2004 · Certification of IYF Global Partner Assessment

2005 · Concluded agreement with Samsung Securities for "Youth Economic Class Project"

2009 · Received the "Samil Transparency Awards for NPO" from Samil Future Foundation
· Awarded "Sustainability Report Award" and "Stakeholder Award" by the Korean Standard Association
· Awarded the "Grand Award for Excellence in Sustainability Management" by the Ministry of Knowledge Economy

2010 · Received the award given by the chairman of the National Assembly's Education, Science and Technology Committee at the "2010 Korea Sharing Awards"
· Concluded agreement with Shinhan Card for Arumin Library

2014 · Concluded agreement with Mercedes-Benz Korea for the <Mercedes-Benz Promise project>
· Concluded agreement with Hyundai E&C for the <Hillstate Kiwoom Volunteer Service Group>
· Signed MOU with Malawi Salima Education Office, FC Malawi

2015 · Commemoration of 15th Anniversary of K&F Establishment
· First in Korea to participate in the global campaign Giving Tuesday

2016 · MBC and Good Friends Broadcasting of <FC Malawi Project>
· Inauguration of 3rd Chairman, Mr. Hun-kyu Lee

2017 · 1st GIVE 'N RACE Marathon with Mercedes-Benz

2018 · Parents' Guide Panel Discussion by Facebook Korea and K&F
· Opening ceremony of the 1st Dream Dodamteo, a daycare center for elementary school students by Shinhan Finance Hope Foundation

2019 · Received award of excellence for program by the "2019 Seoul Social Contribution Award"
· Received Presidential Citation for Shinhan Card Arumin Library at the "2019 25th Reading Culture Award"

2020 · KB Kookmin Bank 'Youth Mentor KB! Learning mentoring' non-face-to-face online OT and special scholarship support.
· SBS <The Most Beautiful Journey in the World> Non-face-to-face social contribution/marathon special aired.
· Mercedes-Benz Social Contribution Committee, 'Give and Race Virtual Run', a campaign to spread the donation culture of untact running (Seoul/Busan)
· Samsung Securities Youth Economics Class online, "non-face-to-face" YAHOO 11th activity.
· 2020 Korea Economic Education Awards Korea International Trade Association President Award (Youth Economics Class)
· Publication of the 20th anniversary booklet and video.

2020 Foundation Operating Performance

(based on Accounting Standards for Not-for-profit Organizations)

2020 Revenue (KRW)

33,761,391,560



● Revenue from non-donations

30.80%

Carry-over 30.35%
Other revenues 0.45%

● Revenue from donations

77.23%

Corporate donations from donations 41.78%
Donations from foundations 17.54%
Individual donations 8.61%
Donated goods 1.27%

2020 Expenses (KRW)

19,263,070,588



● Project costs

96.62%

* Carry-over from the previous year has been used as a donation for CSR projects.

● General administration & fundraising fees

3.38%

K&F's Revenue (past 3 years)

Category	2018	2019	2020
Corporate donations from donations	12,592,301,846	19,889,964,713	14,107,195,311
Donations from foundations	5,167,610,558	6,482,017,976	5,920,202,188
Individual donations	2,178,171,835	2,680,055,445	2,906,505,698
Donated goods	449,110,428	363,394,762	429,268,858
Subtotal (Donation income)	20,387,194,667	29,415,432,896	23,363,172,055
Other revenues	157,241,253	140,461,582	152,048,439
Subtotal (Other revenues)	20,544,435,920	29,555,894,478	23,515,220,494
Carry-over from previous year	9,227,253,305	8,529,367,717	10,246,171,066
Total	29,771,689,225	38,085,262,195	33,761,391,560

(Unit : KRW)

K&F's Expenses (past 3 years)

Category	2018	2019	2020
Project costs	20,654,403,659	26,575,086,958	18,611,687,715
General administration & fundraising fees	670,509,766	729,560,014	651,382,874
Subtotal	21,324,913,425	27,304,646,972	19,263,070,588
Carry-over to following year	8,529,367,717	10,580,078,836	14,545,377,483

(Unit : KRW)

Execution cost details for 2020

	Distribution H	Human resources	Facility	Others	Total	Proportion
Project implementation	6,602,804,503	1,619,263,864	136,776,839	10,252,842,508	18,611,687,715	96.62%
General management	-	384,346,131	28,519,444	97,826,818	510,692,393	2.65%
Expenses	-	52,588,994	3,314,218	84,787,268	140,690,480	0.73%
Total	6,602,804,503	2,056,198,989	168,610,502	10,435,456,594	19,263,070,588	100.00%

(Unit : KRW)

Composition of K&F staff personnel expense

Project staff	Management staff	Fundraising staff	Total
1,619,263,864	384,346,131	52,588,994	2,056,198,989
79%	19%	3%	

(Unit : KRW)

Top 8 major corporate donors of designated donations in 2020

Corporate donor	Amount	Note
Mercedes-Benz and Retailers	4,510,335,470	MB Social Contribution; 4 projects (Mercedes-Benz MobileKids, Mercedes-Benz Mobile Academy, Mercedes-Benz All Together, Mercedes-Benz GIVE)
Shinhan Financial Group Hope Foundation	2,052,203,200	Shinhan Dream Dodamteo
Samsung C&T	1,626,128,985	Junior Construction Academy
Samsung Securities	1,216,302,800	Youth Economics Class, Future Scholarship Program, Community Child Support
Samsung Electronics	1,029,340,837	Samsung Electronics Semiconductor Science Department, Samsung Electronics Dream Design School, Samsung Electronics App development mentoring, Samsung Electronics Semiconductor Science Department (fundraiser)
Lotte Cultureworks	908,741,000	Lotte Cultureworks Happy Anding
KB Bank	900,000,000	KB! university student volunteer group, mentors for youth
Samsung Card	779,319,800	Samsung Card Open Sharing, Samsung Card Golden Bell Study, Education sharing platform
Total	13,022,372,092	

(Unit : KRW)

* Sixty percent of total donations / which is individual donations (donations by executives & staff) has been excluded.

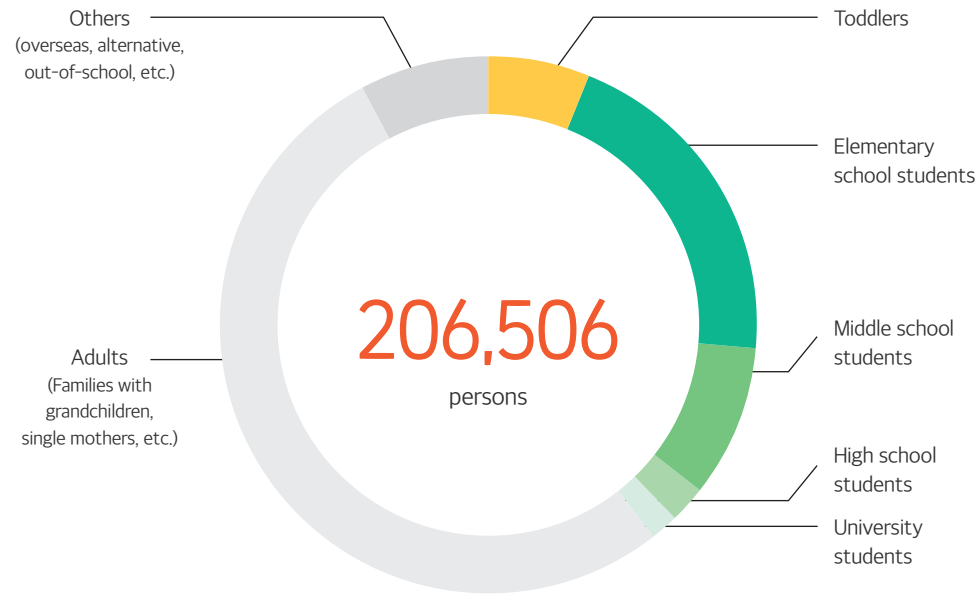
Detailed status of necessary project expense in 2020

Category	Total	Project costs	General administration	Fundraising fees
1. Purpose Project Expenditure	16,855,647,011	16,855,647,011		
1) Domestic	16,451,106,033	16,451,106,033		
2) International	404,540,978	404,540,978		
2. Payroll costs	1,709,464,418	1,341,357,680	327,063,861	41,042,877
3. Severance payment	166,969,292	135,953,736	23,525,798	7,489,758
4. Social Insurance Contribution	145,369,680	114,050,737	27,922,981	3,395,962
5. Welfare benefit	29,077,779	23,587,895	4,931,590	558,294
6. Business promotion expenses	20,736,060		20,736,060	
7. Fund-raising expenses	84,787,268			84,787,268
8. Meeting costs	7,544,120		7,544,120	
9. Travel and transportation expenses	2,753,150		2,753,150	
10. Communication expense	8,830,248		8,830,248	
11. Rent, hire (that one pays)	134,508,000	109,112,890	22,812,557	2,582,554
12. Tax and public imposts	2,593,860	526,647	1,977,851	89,362
13. Repairing expenses	4,168,400	3,381,406	706,961	80,033
14. Insurance	47,650		47,650	
15. Vehicle maintenance cost	465,000	377,208	78,864	8,928
16. Education and training cost	5,317,820	4,313,816	901,901	102,103
17. Book purchase and printing cost	2,961,790		2,961,790	
18. Office supply cost	5,564,384		5,564,384	
19. Commission fee	46,991,176		46,991,176	
20. Outside order expenses	453,600		453,600	
21. Depreciation cost	19,144,402	15,529,939	3,246,891	367,573
22. Amortization of intangible asset	9,675,480	7,848,749	1,640,961	185,769
Total	19,263,070,588	18,611,687,715	510,692,393	140,690,480

(Unit : KRW)

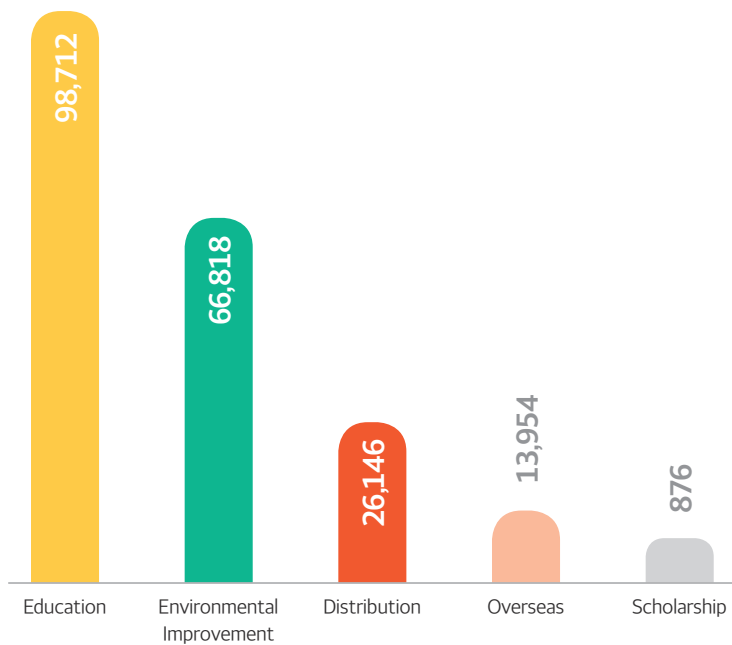
2020 Business Performance

Children We Support



Category (age)	Toddlers	Elementary school students	Middle school students	High school students	University students	Adults	Others
%	6.32%	20.44%	9.14%	2.21%	1.53%	52.77%	7.69%

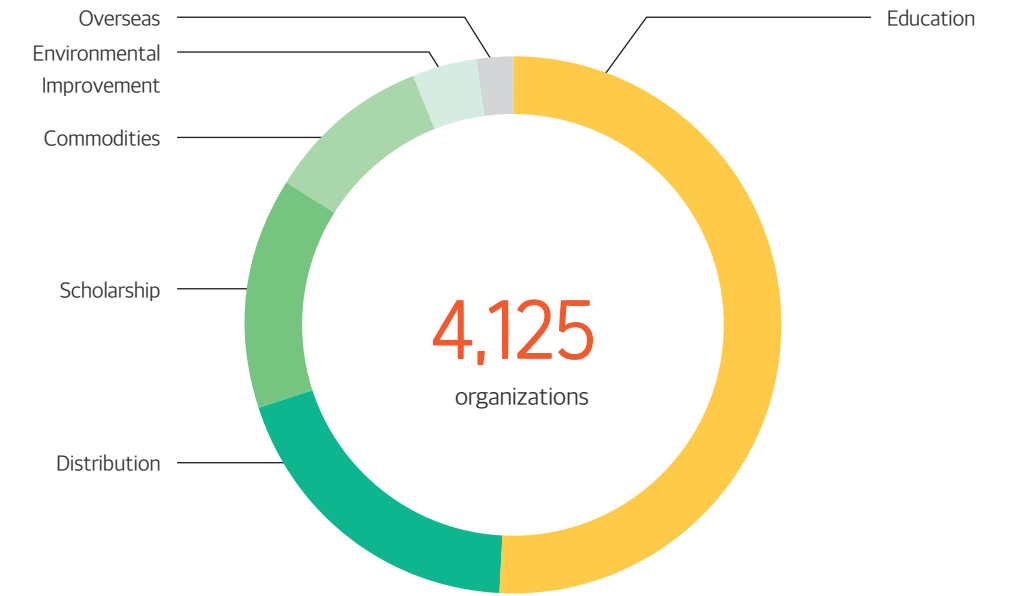
Supported Children by Area (persons)



Category (Business)	Education	Environmental Improvement	Distribution	Overseas	Scholarship
persons	98,712	66,818	26,146	13,954	876

* The data above is based on the projects listed in the Annual Report. As there are projects that are not listed, there may be a discrepancy between the data herein and the actual data of the whole project range.

Organizations We Support

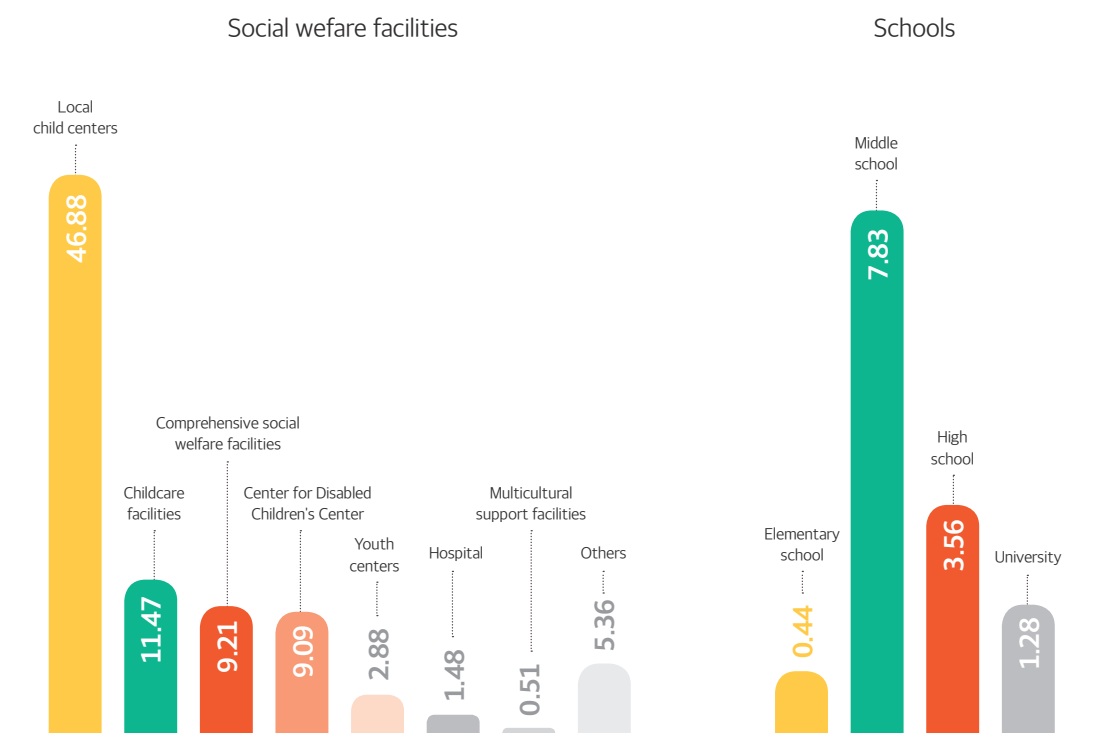


Category (Business)	Education	Distribution	Scholarship	Commodities	Environmental Improvement	Overseas
%	45.89%	25.12%	14.86%	11.78%	2.18%	0.17%

Proportion of Organizational Support

Social welfare facilities
86.88%

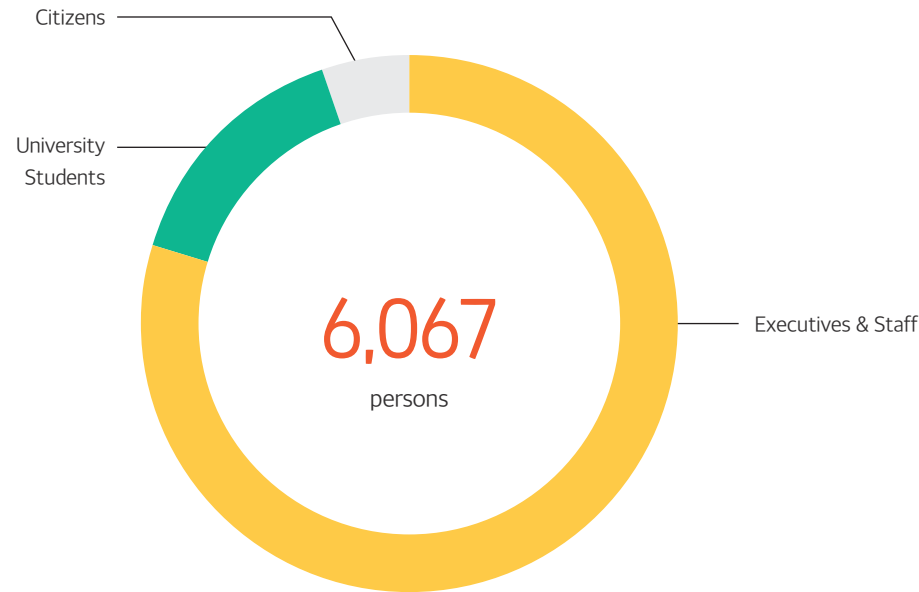
Schools
13.12%



* The data above is based on the projects listed in the Annual Report. As there are projects that are not listed, there may be a discrepancy between the data herein and the actual data of the whole project range.

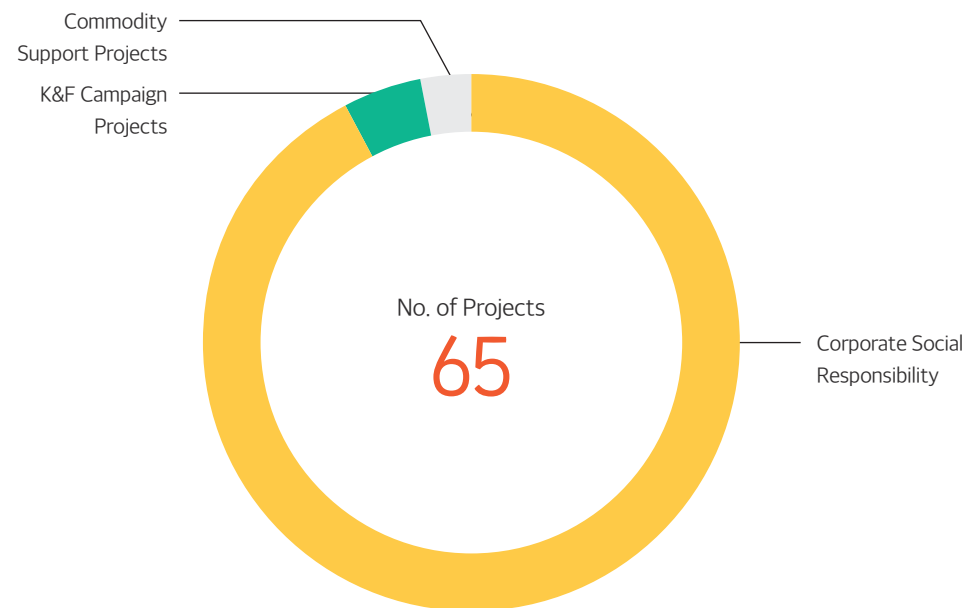
2020 Business Performance

Volunteers



Distribution	Executives & Staff	University Students	Citizens
%	81.90%	13.96%	4.14%

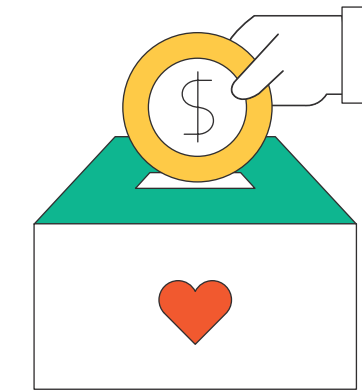
Distribution of volunteer support



Distribution	Corporate Social Responsibility	K&F Campaign Projects	Commodity Support Projects
%	92.31%	4.62%	3.08%

* The data above is based on the projects listed in the Annual Report. As there are projects that are not listed, there may be a discrepancy between the data herein and the actual data of the whole project range.

Donating Companies and Individual Donors



Total Donation in 2020

23,363,172,055

Total No. of Individual and Corporate Donors in 2020

33,285

Companies & Organizations



Donation from companies & organizations

20,446,666,357

No. of corporate and organization donors

448

Individuals



Individual donations

2,916,505,698

No. of individual donors

32,837

* The data above is based on the projects listed in the Annual Report. As there are projects that are not listed, there may be a discrepancy between the data herein and the actual data of the whole project range.

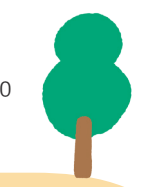


Glance of Kids and Future Foundation 2020

Foundation's past footsteps and achievements

1

- Mercedes-Benz Social Contribution Committee Mobile Academy 11th Headquarters in Germany.
- Shinhan Bank delivered and donated 200,000 KF94 masks to prevent COVID-19 infection.



2

- Mercedes-Benz Social Contribution Committee Mobile Kids 4th Player Safety Online Painting Contest.
- Delivery and support of COVID-19 prevention masks to Shinhan Dream Dodamteo users.
- Distribution and support of masks to Shinhan Card Arumin Library.
- Junior Product Academy 20-1 Semester Teacher/Instructor Training.
- Acquired the highest transparency certification for 4 consecutive years based on Korea Guide Star.



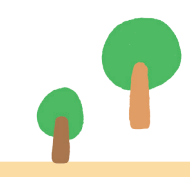
3

- KB Kookmin Bank 'Youth Mentor KBI Learning Mentoring' Non-face-to-face Online OT.
- Youth Economic Class University Student Volunteer Group YAH0 Online Event and Online Instructor Training.
- Kolon Multicultural Family Child Support Project Dream Job Ara 9th Closing Ceremony.
- CJ Dream Nurturing Scholarship Student mentoring activities and payment of activity expenses.
- Hyundai E&C Hillstate Dream Nurturing University Student Volunteer Group Mentor-Mentee Online Monitoring.
- Start of non-face-to-face coding education for the 20-1 semester of Junior Product Academy.
- Samsung Fire & Marine Insurance Scholarship Fund for Children Accidental Accidents New Year Gifts and Sanitary Supplies.
- FC Malawi Distributing masks related to COVID-19 prevention Distributing videos and prevention manuals to improve awareness of COVID-19.
- Mercedes-Benz Social Contribution Committee Give and Dream scholarship project establishment and scholarship distribution.



7

- Janssen Korea employee participation donation challenge donation Support for the repair and replacement of wheelchairs for children and adolescents with walking disabilities.
- Kolon Multicultural Family Child Support Project Rainbow Stepping Stone Mentoring 5th Online Dissolution Ceremony.
- FC Malawi Handwashing Kit Manufacturing Method Training and Installation.
- Hyundai Auto Ever Smart Mobility Engineering Experience Education University Student Volunteer Group Launch Ceremony.
- Samsung C&T Junior Construction Academy University Student Supporters 5th Inauguration Ceremony.
- Shinsegae Book Support Business Agreement and Opening Ceremony.
- Mercedes-Benz Social Contribution Committee Untact Running Campaign to spread donation culture 'Give and Race Virtual Run' (Seoul).
- Shinhan Card Arumin Library Book Mentor Program Online Content Production.



4

- Mercedes-Benz Social Contribution Committee Provided relief supplies to the vulnerable and medical staff in Daegu/Gyeongbuk area.
- Lotte Cultureworks Happy Ending Film Production Class Free Semester Live Video Class.
- Online mentoring for the Paul Jansen Scholarship Fund and delivery of activity contents.
- Mercedes-Benz Social Contribution Committee Mobile Academy Online Lecture.
- P&G Korea employee donation campaign (#Let's overcome COVID-19 together).
- Samsung Fire & Marine Dream Playground quarantine (4 times a year).

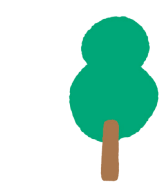
5

- Samsung Securities Youth Economy Class Base Center Online Workshop.
- Samsung Asset Management Children's Investment Economics Class Agreement.
- E-Mart Kids Library Mungyeong Branch Construction and Book Cost Execution.
- 'Tim Janssen' Bicycle/Walk fundraising event, a donation challenge for Janssen Korea employees.
- Samsung Card Open Volunteer Mural Kit Execution (Busan Choryang Elementary School).
- EY Han-Young Hanmaeum Mathematics Mentor School online conversion operation (~September).
- EY Hanyoung Agjak Classroom online/offline concurrent operation (~July).
- Samsung Electronics Semiconductor Science Class begins.



6

- Samsung Securities Future Scholarship Scholarship Student Academic Encouragement Kit.
- Mercedes-Benz Social Contribution Committee's 'Healthy Together Campaign' employee's daily quarantine kit packaging service.
- KOICA overseas support childcare community maintenance education and after-school classes (sewing machine education program, etc.).
- Lotte Cultureworks Supporters Carrot 4th Online Launch Ceremony.
- Mercedes-Benz Social Contribution Committee Mobile Academy Career Development Workshop.



8

- Hyundai E&C Hillstate Dream Growing University Student Volunteer Corps 6th Dissolution Ceremony.
- KB Kookmin Card's 'COVID-19' Overcoming Social Enterprises and Vulnerable Classes Sponsored Donation Delivery Ceremony.
- Mercedes-Benz Social Contribution Committee Mobile Kids Player Safety Online Exhibition.
- Junior Water Academy 20-2 Semester Teacher/Instructor Training.
- Start of non-face-to-face coding education for the 20th and 2nd semesters of Junior Product Academy.
- Samsung Electronics Department of Semiconductor Science Samsung Electronics - Office of Education - Kids and Future Foundation 3-party business agreement ceremony.

9

- CJ Olive Young Girls' Education College Student Supporters 1st Online Launch Ceremony.
- SGI Dream Tree Hope Partner Scholarship Fund Hope Mentoring 6th Online Launch Ceremony.
- Mercedes-Benz Social Contribution Committee All Together Campaign 'Healthy Together' donated walk-through equipment to medical institutions.
- Youth Economic Class University Student Volunteer Group YAH0 Online Launch Ceremony.
- Samsung Securities Future Scholarship Scholarship Student Online Monitoring.

11

- SBS <The Most Beautiful Journey in the World> Non-face-to-face social contribution special broadcast (11/1)
- Hosted Hyundai Autoever Smart Mobility Engineering Experiential Education Competition.
- Mercedes-Benz Social Contribution Committee Launched Mobile Kids Play The Safety Online Education Platform.
- Shinhan Card Arumin Library Digital Library No. 1 opened for the first time.
- Mercedes-Benz Social Contribution Committee All Together 'Healthy Together Campaign' winter kit production.
- Youth Economic Class University Student Volunteer Group YAH0 Online Dissolution Ceremony.
- Hyundai Kefico Junior Smart Vehicle Engineering Class Non-face-to-face real-time video training for social welfare institutions.
- Samsung Fire & Marine Insurance Scholarship for Children Accident Recruitment for 2021 Scholarships.



10

- AstraZeneca Korea held Hope Tube event for children of cancer patients.
- Mercedes-Benz Social Contribution Committee held the 'Give and Race Virtual Run' campaign to spread the donation culture of untact running (Busan).
- Hyundai E&C Hillstate Dream Growing University Student Volunteer Group 7th inauguration ceremony.
- AMOREPACIFIC online career mentoring.
- Kolon Multicultural Family Child Support Project Rainbow Stepping Stone Mentoring 6th Mentor Pre-education and Mentor-Mentee Partnership Ceremony.
- LH mentor and little friend 2nd online literacy education.



12

- SGI Seoul Guarantee Nursing Facility Youth Independence Support Program Scholarship Fund Donation Ceremony.
- CJ Olive Young Girls' Education University Student Supporters 1st Online Dissolution Ceremony.
- Electric safety accident/burn child medical expenses support project 'Miri, stay strong' fund delivery ceremony.
- Youth Economy Class Economic Playground Recruitment and selection of base centers for 2021.
- Shinhan Financial Hope Foundation Shinhan Dream Dodamteo (joint childcare sharing center) 100th store opened.



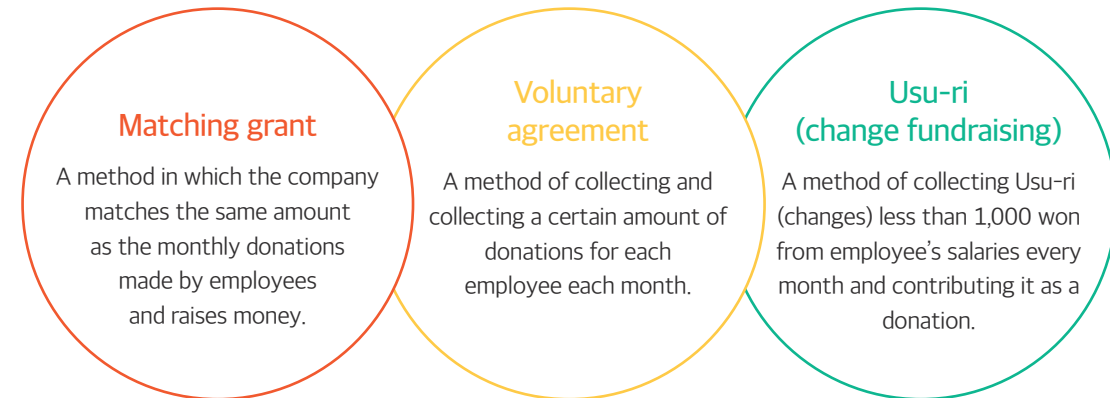
How to Support K&F

Partnership for Corporate Social Responsibility (CSR)

Our partnerships operate in the process below. For more information, you can contact us through our website, via telephone, or by email. We will get back to you upon reviewing your inquiry.



Designated Donations from Employees and Organizations



Individual Donation

A donation can be made in a fixed amount over a consecutive period of time; a one-time donation is also possible starting at 10,000 KRW. These funds are allotted to our foundation's campaigns such as the K&F Talent Scholarship and FC Malawi.

How to Make a Donation You can participate by just a few clicks; click on 'Donation' on our website (eng.kidsfuture.or.kr)

Happy Bean Donation Participation is also possible through Naver's 'Happy Bean Donation' (www.happylog.naver.com/kidsfuture.do)

Direct donation is available via ARS +82-60-700-1533 or +82-2-843-8478

Deposit can be made to the accounts below Shinhan Bank: 100-016-715700

Donating Goods

You can join our sharing efforts by donating various goods such as school supplies, clothes, and books.

Inquiry

www.kidsfuture.or.kr(Consultation) kidsfuture@kidsfuture.or.kr +82-(0)2-843-8478





We help children in need
To provide a fair life opportunity
A foundation that works with donors.